



■ 概述 Summary

RT20 系列刀型触头熔断器主要用于额定电压至交流500V，额定电流至1600A的配电系统中作为线路和电缆的过载保护和短路保护。

本系列熔断器能与国外符合IEC、DIN标准的同类熔断器完全互换。

Series RT20 fuses with blade contacts are mainly used in distribution net of rated voltage up to 500V a. c. and rated current up to 1600A for the protection of line and cables against all damages from fault currents between overload and rated breaking capacity. This series fuses achieve full exchangeability with similar fuses on domestic and international markets.

■ 特色 Features

- 特殊设计的变截面尺寸熔体，以及起“M-效应”作用的低熔点合金在位置、形状、和定量上的精确配置，降低了熔断体功率损耗，形成理想的多段保护特性。
- 高强度致密型瓷管具有极好的耐冷热剧变和抗冲击性能。
- 有较高烧结温度的高纯度石英砂作灭弧介质。
- 整体冷锻成型触刀，结构强度和导电性能良好。
- 多种形式的底座可供选择使用。
- *The particular design of variable section size of the fuse-element and the accurate configuration of low melting point alloy taking metallurgic effect in respect of the position, shape, and amount have lowered the power dissipation and formed ideal protection characteristics.*
- *The high strength dense alumina ceramic tubes have excellent performance against abrupt temperature change and resistance to impact.*
- *High purity quartz sand with comparatively high sintering temperature is used as arc extinguishing medium.*
- *The integral blade contacts are shaped with cold forging, which has good structure strength and fine electrical conductivity.*
- *Varies forms of fuse-base are available to meet different needs.*

■ 型号及其含义 Model denomination



■ 主要技术指标 Technical data

产品标准	Product standard	GB/T13539 IEC60269
额定电压	Rated voltage (v)	AC500V AC690V DC250V(440V)
分断范围和使用类别	Breaking range and utilization category	gG
额定绝缘电压	Rated insulating voltage (V)	AC690
额定分断能力	Rated breaking capacity (kA)	120 KA/ AC500V ; 50 KA /AC690V; 100 KA/ DC250V(DC 440V)
过电流选择性(I _n ≥16A)	Over-current discrimination (I _n ≥ 16A)	1.6:1

注:尺码4和4a熔断器的额定电压为交流400V，额定分断能力为100kA。
Note: Rated voltage 400V a. c., and rated breaking capacity 100kA .for size4 and 4a.



熔断体 Fuse-link

尺码 Size	额定电流 Rated current(A)	尺码 Size	额定电流 Rated current(A)
000	4	2	125
	6		160
	10		200
	16		224
	20		250
	25		315
	32		355
	40		400
	50		315
	63		355
00	80	3	400
	100		425
1	125	4	500
	160		630
	80		800
	100		1000
	125		1250
	160		1600
	200		800
224	1000		
250	1250		
	—	4a	1600

熔断器底座 Fuse-base

尺码 Size	极数 Poles	额定电流 Rated current(A)	重量 Weight(Kg)
00	单极 Single pole	160	0.23
	3极, 并列式 3-pole in parallel		0.46
	3极, 直列式 3-pole in vertical		1.08
1	单极 Single pole	250	0.64
	3极, 并列式 3-pole in parallel		2.0
2	单极 Single pole	400	0.67
3	单极 Single pole	630	0.92
4	单极 Single pole	1000	3.2

附件 Accessories

底座附件 Accessories for fuse-base

尺码 Size	名称 Name	用途说明 Usage notes
00	隔板 Clapboard	用于00号单极底座之间, 隔板与底座紧靠安装。 For size 00 single-pole bases.
1	隔板 Clapboard	用于1号单极底座之间, 需结合1号支持件使用。 For size 1 single-pole base with support.
2	隔板 Clapboard	用于2号单极底座之间, 需结合2号支持件使用。 For size 2 single-pole base with support.
3	隔板 Clapboard	用于3号单极底座之间, 需结合3号支持件使用。 For size 3 single-pole base with support.
1	支持件 Support	用于支撑极间隔板 For support clapboard.
2	支持件 Support	用于支撑极间隔板 For support clapboard.
3	支持件 Support	用于支撑极间隔板 For support clapboard.

注: 并列式3极底座中的极间隔板属于底座的组成零件。
Note: Clapboards in the 3-pole bases of side are belonged in the parts of bases.



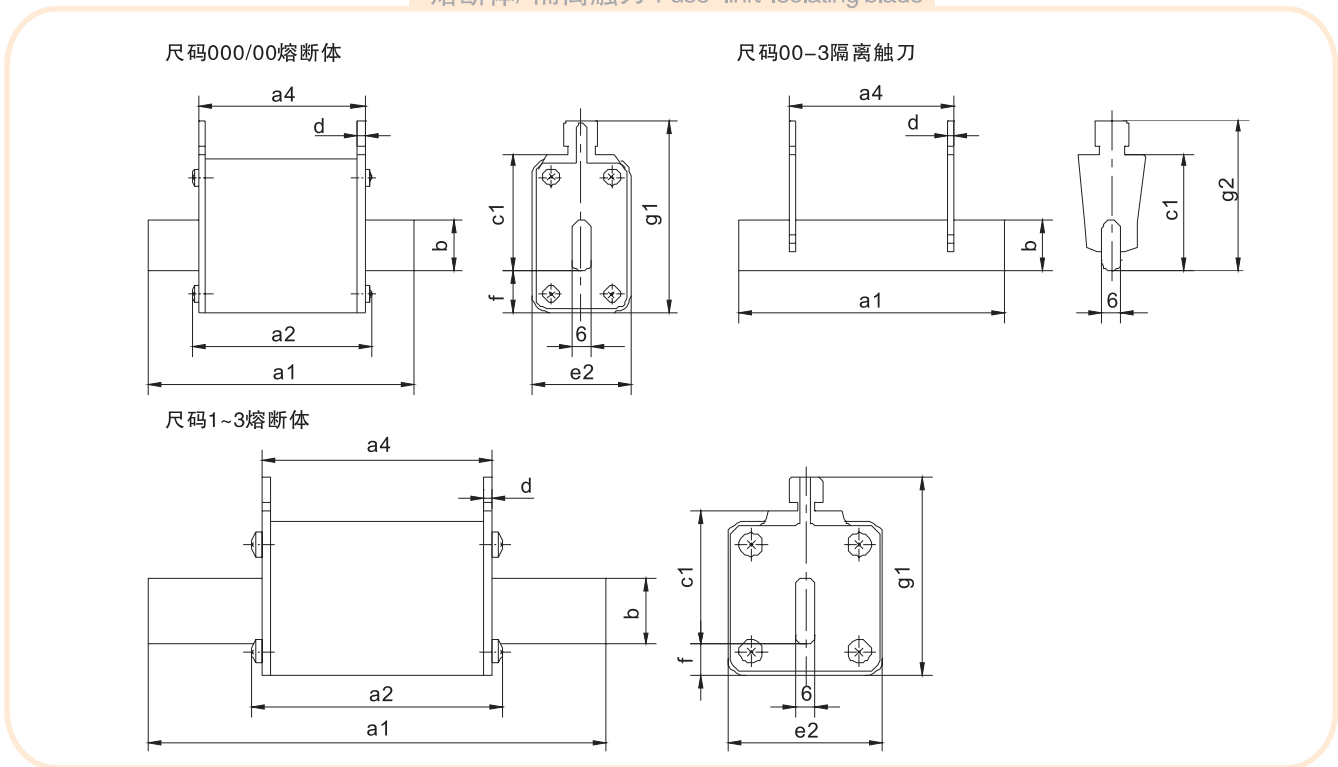
隔离触刀 Isolating blade

尺码 Size	额定电流 Rated current(A)	重量 Weight(Kg)
00	160	0.07
1	250	0.15
2	400	0.21
3	630	0.25
4	1600	

手柄: 适用于尺码00~4熔断体。
Handle: Suitable for fuse-links size 00~4

■ 外形及安装尺寸 Overall dimensions

熔断体/ 隔离触刀 Fuse-link/ Isolating blade

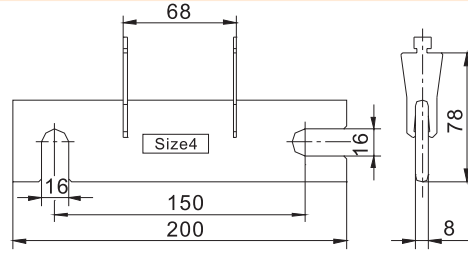


尺码000~3 熔断体/ 隔离触刀尺寸
Dimensions of fuse-links and isolating blades size 000~3

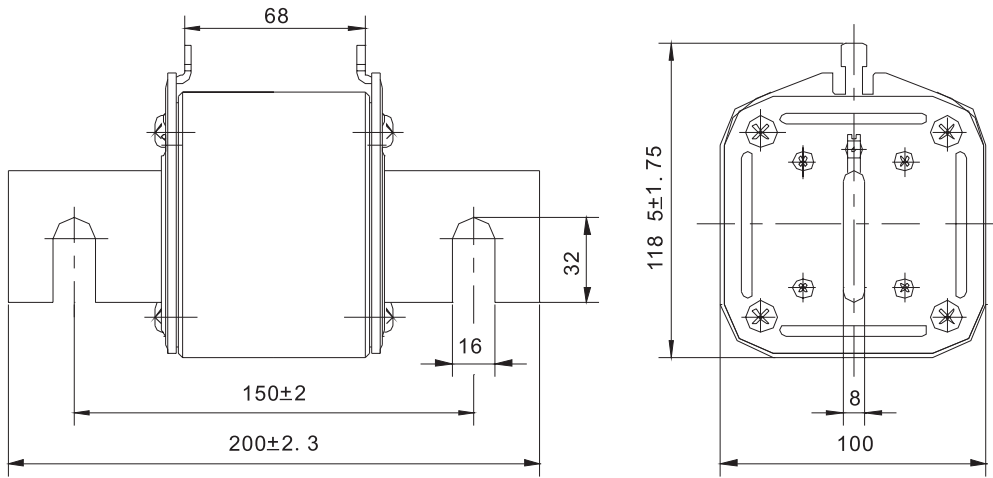
尺码 Size	a1	a2	a4	b	c1	d	e2	f	g1	g2	额定电流 Rated current(A)
000	78.5	54	49	15	35	2	21	7.5	53	-	4~100
00	78.5	54	49	15	35	2	30	12.5	58	45	125~160
1	135	74	68	20	40	2.5	48	9	59	50	80~250
2	150	74	68	20	48	2.5	48	9	67	58	125~250
				25	48		57	12.5	71	58	315~400
3	150	74	68	25	60	2.5	57	12.5	83	70	315~400
				32	60		70	15	85	70	425~630



尺码4 隔离触刀 Isolating blade size 4

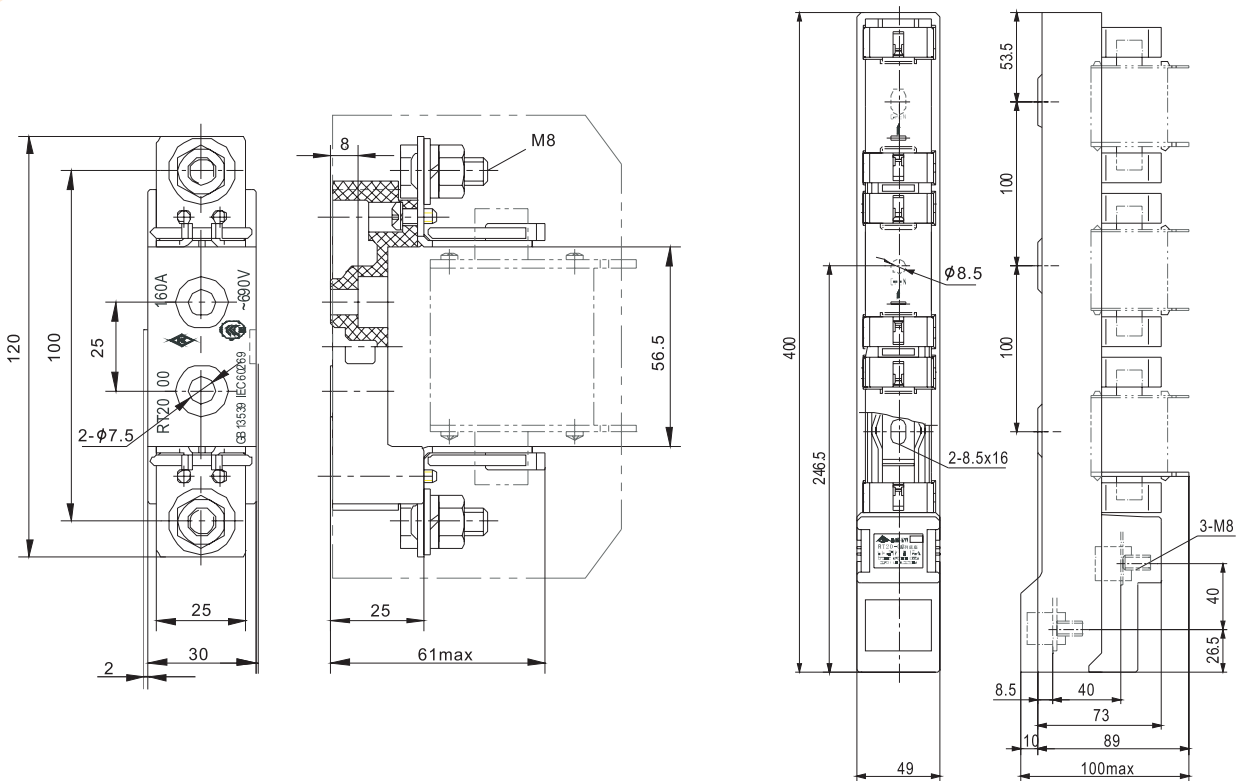


尺码4 熔断体 Fuse-link size 4



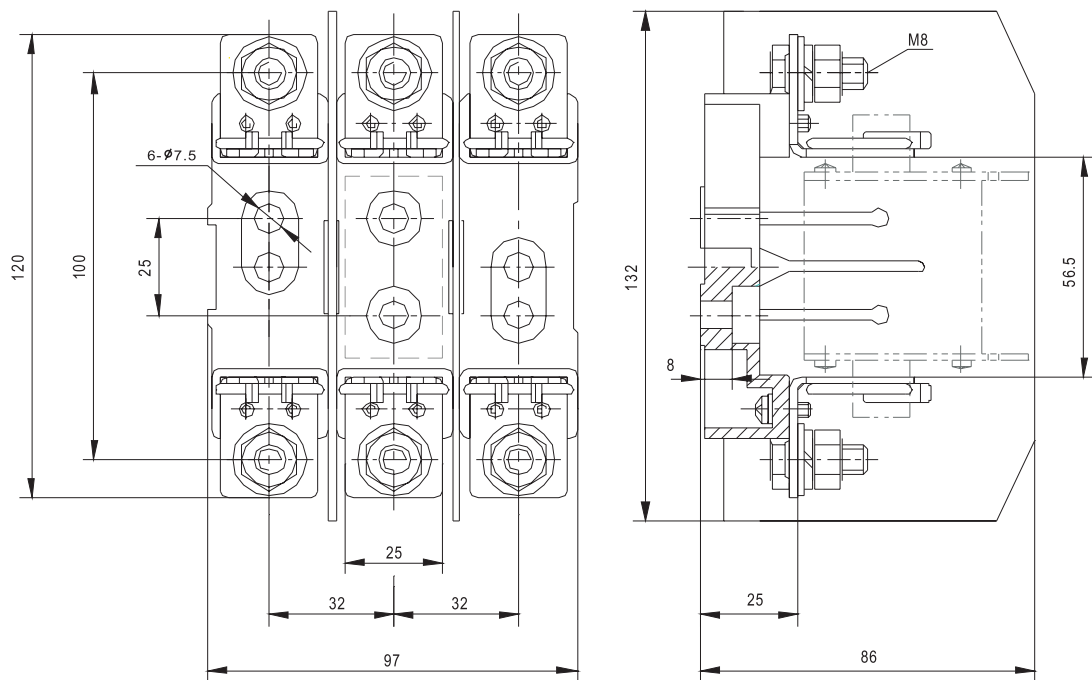
熔断器底座 Fuse-base

尺码00底座 (单极/3极直列式) Size 00 (single pole/3-pole in vertical)

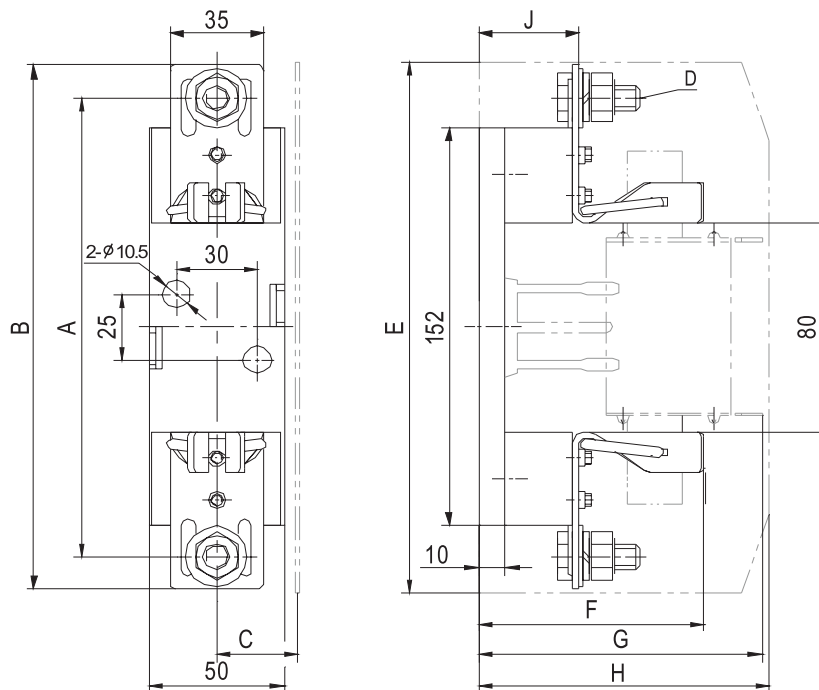




尺码00底座 (3极并列式) Size 00 (3-pole in parallel)



尺码1~3 单极底座 Single pole fuse-base size 1~3

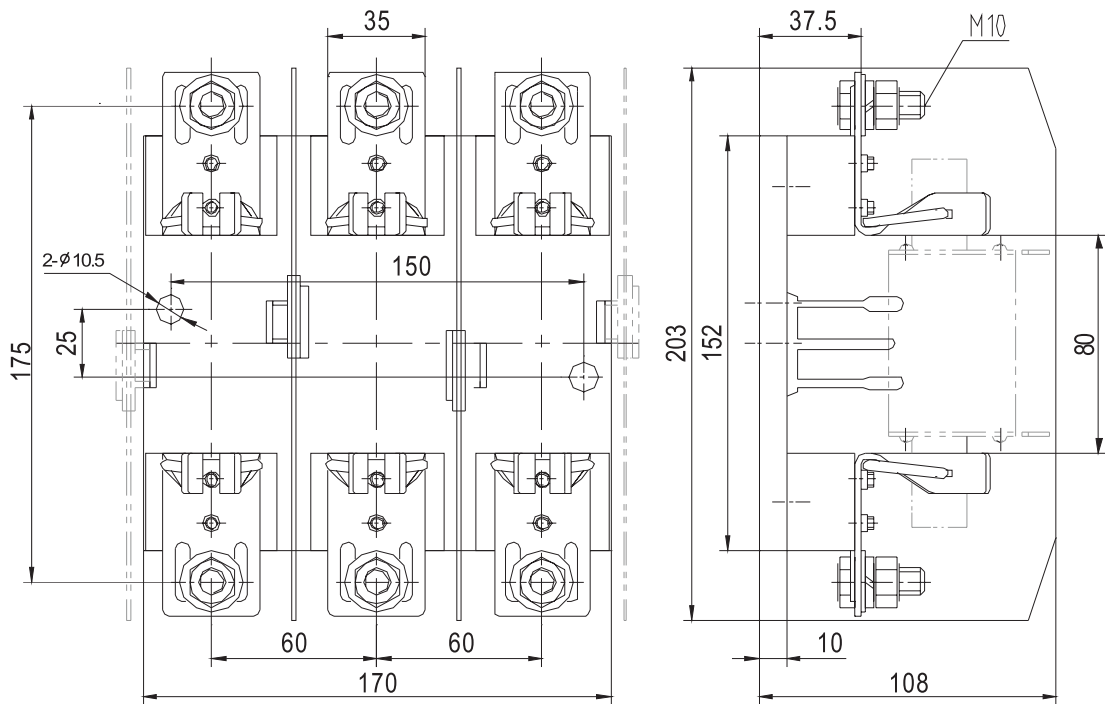


尺码1~3单极底座尺寸
 Dimensions of single pole fuse-base size 1~3

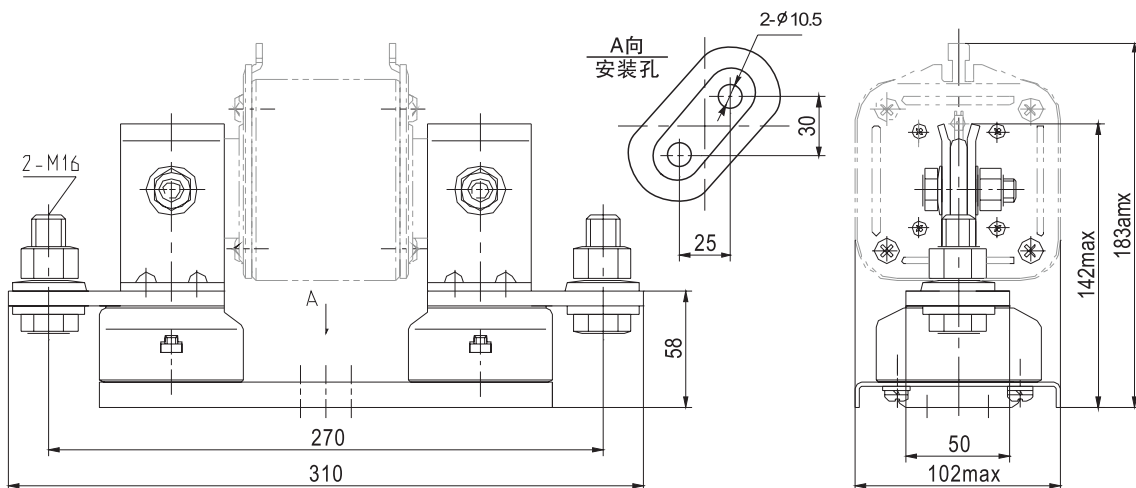
尺码	Size	A	B	C	D	E	F	G	H	J	mm
1	175	200	30	M10	203	84	105	108	37.5		
2	200	225	35	M10	228	90	113.5	117	37.5		
3	210	240	40	M12	243	98.5	125.5	131	40		



尺码1 并列式3极底座 3-pole fuse-base size 1 in parallel



尺码4底座 Fuse-base size 4



时间-电流特性
Time-current characteristics

符合GB13539.2、IEC60269-2-1标准中的规定。
Time-current zone is according to GB13539.2 and IEC60269-2-1 for gG fuse-links. Please refer to the relevant standards.